



Quilting, Redwork & Complex Outlines

Generations® Quick Lesson

By Bernadette (Bernie) Griffith

In **Generations®** automatic digitizing you can create no jump outlines, quilt motifs or redwork in a few clicks using one of the fill pattern tools from almost any design.

This Is What You Need:

Generations® automatic digitizing Version 1.1

Background716.WMF

Any image file, design file, or font that you would like to outline or turn into redwork can be done with this feature **Exclusive** to **Generations®** software.

First Things First:

All measurement used in this lesson are in millimeters. If you are working in inches, please go to View and then View Preferences and change the Measure unit to mm.

You can always change that back to inches later.

Here We Go:

1. Open the **Generations®** program from the icon located on your desktop or from the Windows® Start menu.
2. Click on the Insert Image icon from the Create toolbar.
3. Select the location where you have stored your image and click on that to open it.
4. Select the image you wish to use for outlining.

For this lesson I am selecting an image that has separated areas so that you can see the versatility of this tool.

5. Double click on the thumbnail of your image and insert the image into the **Generations®** program Image Processing.
6. In the image processing, allow the program to select your settings and click on the OK button to insert this image into the program for auto digitizing.
7. When the Resize option box opens resize the image if needed or click on OK to insert.
8. When your image is inserted into the program, **do not** generate yet.

Since the program did not generate the background image, it is easy to forget that that is an area in the program that can be filled with stitches. We need to remove this area from the design before moving on to the next step.

9. Right click on the background color. This is usually a white background surrounding the main image.
10. The area will filled with a gray shaded color showing that it is selected.
11. Press and hold the CTRL key on your keyboard, then press the DEL (delete) key and remove the background area for good from the design.
12. Generate to place the stitches in the design.



We have a nice design here but there are many separated areas and outline this would mean setting the stitch order on all the outlines, 40 to be exact, and making sure that the in and out points were set to cut down on the jump stitches. Wow what a lot of work!



But with Generations® we can create an outline that is all one piece and maximize the use of the small jumps between the areas.

Creating the Outline

1. Click on Edit on your menu bar at the top of the design window.
 2. Choose the Select and then Select All Filled Areas option from the menu.
 3. This will place flashing blue lines around all the areas in the design on your screen showing that they are selected.
 4. Now click on Accessories from the menu bar.
 5. Choose the Stamped Patterns and then Save Stamped Pattern option from the menu options.
 6. The Save Stamped Pattern Window will open.
 7. Name the Pattern and click OK to save the pattern.
- This is now saved for future use.

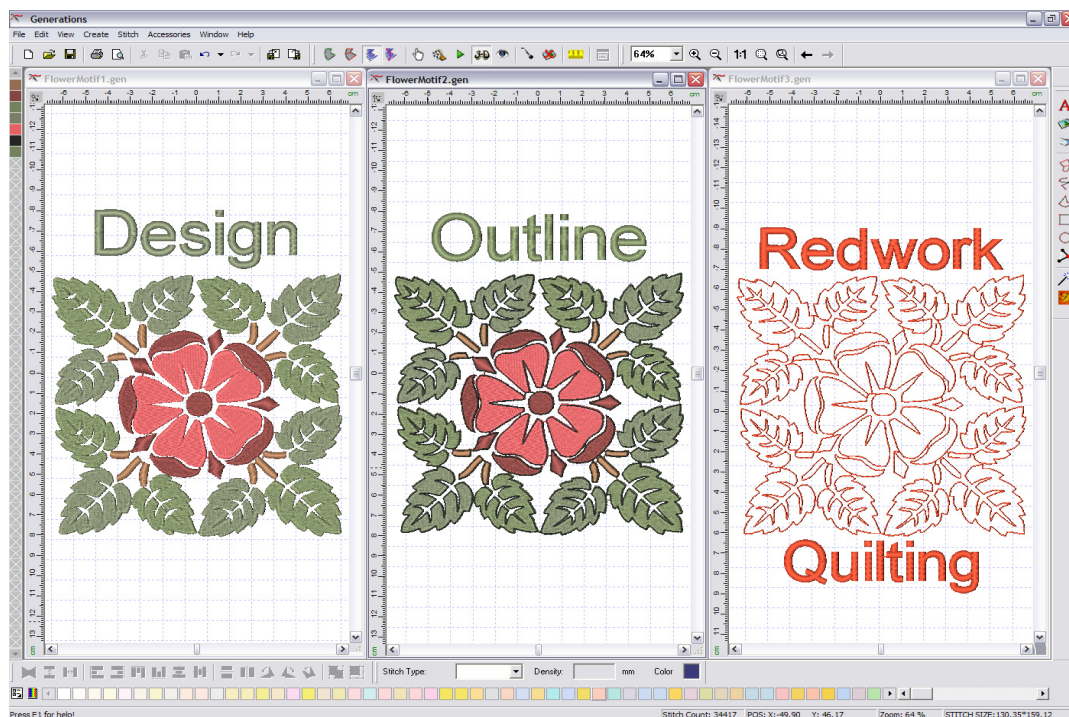
For Outlining the Design:

1. Click on Accessories from the menu bar
 2. Choose Stamped Pattern and then Open Stamped Pattern from the menu options.
 3. Located the Stamped Pattern you just saved and double click on it.
- This has inserted the Stamped pattern into the Generations® program at the size of the original design and placed it on top of the design.

4. Right click off to the side of your design on a blank space on your screen to make sure that nothing is selected in the design.
5. Generate and you have a one piece outline of your design, correctly lined up.
6. Open the Stitch Sequence Viewer and scroll to the bottom of the strip. You will see your new outline there.
7. Left click on the cell in the Stitch Sequence Viewer that contains the new outline.
8. The outline is now showing on your screen with flashing blue lines showing that it is selected.
9. Open the Stitch Properties (press the space bar on your keyboard or use the Stitch Setting Icon) and change the stitch type and color as desired.

For Red work or Quilting:

1. Click on the New icon to open a new blank design page in Generations®.
2. Click on Accessories from the menu bar
3. Choose Stamped Pattern and then Open Stamped Pattern from the menu options.
4. Located the Stamped Pattern you just saved and double click on it. This has inserted the Stamped pattern into the Generations® program at the size of the original design.
5. Generate and you have a one piece outline to use for redwork or quilting.
6. On the upper left of your design window, click on the color chip to select the outline.
7. Open your Stitch Settings and change the stitch type and color as desired.

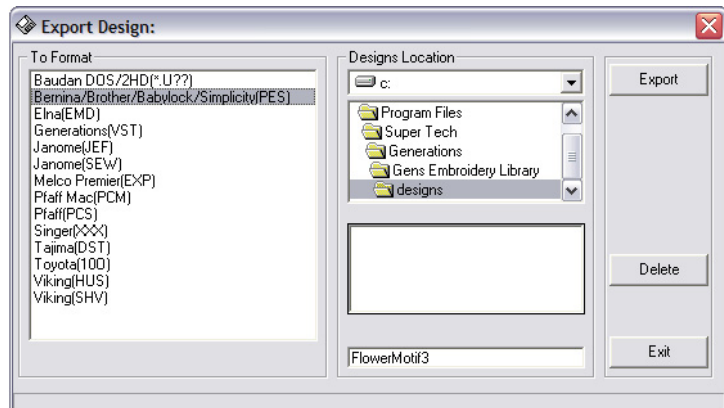


Finishing Up:

1. Save your design file by selecting Save and then Save As from the File menu.
2. Select the desired folder where you want to save your design to.
3. Then name the file and click OK to save it.

Your design is now saved in the .GEN format and you can edit this file any time you need to.

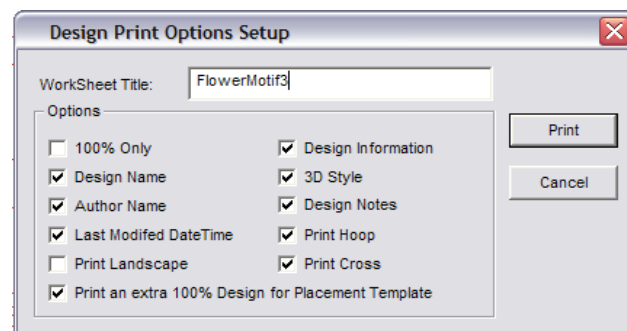
4. Export your design to your machine format by selecting Export from the File menu.
5. When the Export window opens, select the drive and or folder that you would like to send your design to.
6. Then click on the export button.



Generations® will automatically rotate the design if needed to fit in your machine hoop. If you are using the PES format, Generations® automatically exports in the correct hoop size for the design. This is great for the smaller field machines.

If you would like to have a template to layout, you can print the design information complete with a separate template, hoop and all.

1. Select Print Worksheet from the file menu.
2. The Design Print Options Setup menu will open where you can select what you would like to have on the print out.
3. When you have finished selecting the options that you want to display on the printout, click on the Print button.
4. Start Stitching!



Generations® Software
Copyright©Notcina Corporation 2003
The Leader in Automatic Digitizing Software
Artwork from ArtExplosion 600,000